

# Board of Trustees Newsletter

Term 3, 2011

Beachlands School, 18 Bell Road, Beachlands, Manukau City 2018  
www.beachlands.school.nz, Ph: 536 6757

## Chairperson's Chat *By Jane Winterman*

Another term has flown by which means we are rapidly approaching the end of the year! My section this term will focus on a couple of subjects, firstly the annual Beachlands School Community survey and secondly, the upcoming mid-term trustee elections.

### Community Survey

On behalf of the Board I would like to personally say "Thank You" to all 39 families who responded to this, the fourth year that the survey has been conducted. The response rate was 30% down on last years' and represents around 10% of the families at our school - which is a bit disappointing. Hopefully next year we'll receive feedback from more families as the only way for the school to get better at what it does is for the parents/caregivers and students to provide candid evaluations.

Those of you who are new to the school may ask yourself "Why do the BOT send out the survey?" The answer is simple; because feedback is important and it matters! No matter what the results and feedback, we are committed to taking the time to reflect on what we are hearing and then putting plans in place to make the necessary changes.

Overall satisfaction rating was down on last year at 62%. While it's never nice to go backwards, the result is still a good one. Along with the ratings there were many, many comments included and we'll now use all this valuable information as input into the strategy and action planning that we complete during the fourth term.

### Mid-Term Trustee Elections

The call for governance [*the role of the Board of Trustees*] is all about making a difference for our schools and the over-riding focus and objective of effective trusteeship is the quality of education that students at each school are receiving.

Our Board continues to adopt the mid-term or staggered election cycle where half the parent representatives are elected mid-term or 18 months after the triennial election [*the term for each Trustee is 3 years - so we replace half our board every 18 months for consistency*]. Mid-term elections are usually held in September - but due to the Rugby World Cup - this time they have been delayed until just over a week before the General Election in November.

The countdown is underway for the elections being held on November 18<sup>th</sup>. Two 2 parent representative places are up for election and nomination papers have been sent out - if you haven't received yours please obtain one from the school office.

If you think this is something you would like to be an active member of, please nominate yourself or get someone else to by noon Friday October 21<sup>st</sup> to be part of shaping the leaders of tomorrow.

## INSIDE THIS ISSUE

- 1 Chairperson's Chat
- 2 Principal's Portion
- 3 Finance Focus
- 3 Property Profile
- 4 Cultural Corner
- 5 Health and Safety

---

*"Nominations close  
noon Friday 21<sup>st</sup>  
October 2011.  
Elections take place  
November 18<sup>th</sup>,  
2011".*

---



*Learning opportunities are limitless*

## Principal's Portion *By Acting Principal's Shirley Winters and Barbara Dinnissen*

### Dear Parents and Caregivers

What an amazing and inspiring term at Beachlands School. We have been really fortunate to be given the opportunity to lead the school and to be able to meet some more of the wonderful children that come here every day to be the best learners that they can be. We have been impressed with the commitment that students are showing to achieving their goals, and the ability of students to discuss their learning at all levels of the school.

The teaching team that we are privileged to work with are highly professional and committed to being learners alongside the children they work with. The wider team at Beachlands School often go above and beyond their job descriptions to ensure that the young people in our care are given as many opportunities to grow as they can. We believe that Beachlands School is an innovative school that our community can be proud of.

We would like to thank all the parents who actively support the school, the parents who help in classrooms, drive children to sports and cultural events, come to assemblies, help their child to dress up, attend student learning conferences, volunteer for camp, raise money with the PTA etc... Without your help our school would not be able to offer the learning experiences that we do.

Being a green-gold environmental school is a big deal, it shows a long-term commitment to caring about the ways in which we treat the earth, and to making sure that our school and community are making a difference to the long term sustainability of the area that we are fortunate enough to live in. Teaching our children to care about how they use resources and look after the world is part of our belief that we are here to educate the whole person.

We have had a really busy term at Beachlands School, one that has been filled with learning celebrations, dress-ups, assessments, goals being met, trips, dancing, singing, playing lots of sports, running cross countries, playing netball, learning orienteering and of course, supporting our adopted team as well as the All Blacks in their world-cup campaign.

We are all looking forward to a break over the holidays and hope that you enjoy spending time with your children. Take care, keep safe and we look forward to seeing you all back refreshed for a very short term 4.

We're looking forward to more great learning in the coming term and wish you all a safe and happy term break.

---

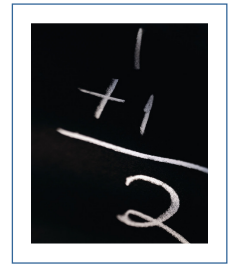
*"The personal reviews are a really powerful tool for empowering students to accept responsibility for their own learning and also ensure that learning is individualised for each student."*

---

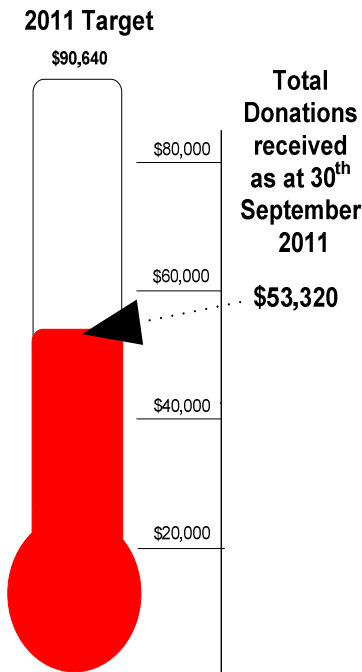
**Finance Focus** *By Raechel Cummins*

Firstly, thank you to those who have paid the donation, either in full or through regular installments. We have collected \$53,320 - just over half. Every bit helps to bridge the funding gap between what we receive from the Government, and what we need to run our school.

It's not too late to pay...we count on your generosity. We still have a lot of expenses we need to meet by the end of the year. If you would like to pay on-line, the schools' bank account number is 12-3040-0490765-00 (Please put your family name in the description). And don't forget, your donation is tax deductible - a receipt will be issued by the School office.



*Funding for the future*



For new families to our school, the term one newsletter (found on our website under School Information/Board of Trustees) included a section from me, answering some frequently asked questions on the level of Government funding, decile ratings and donations. This set out why we have to place quite strong emphasis on the need for families to pay their voluntary donation.

Second, thank you to our tireless, hard working, dedicated PTA. We have a fantastic group of parents who are working hard for our children (with lots of fun in the process!). The intermediate and community balls were once again a real highlight for pupils and adults alike!

Finally don't forget to support our local businesses. Many local businesses support our school, and their generosity is extremely valued.

Have a safe and happy holiday.

---

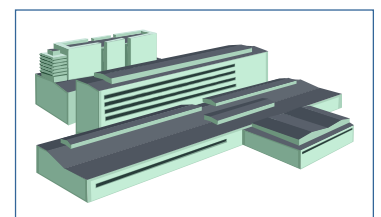
*“Voluntary donations this year are budgeted at \$90,640. So far we have received \$53,320 or 58.8%!*

***Thank You!***

---

**Property Profile** *By Bill Sole*

After a busy year with buildings, there doesn't seem to be very much to report on the property front this time. But what I can let you know is that we are still waiting for final approval from the Ministry of Education for our next five year maintenance grant so I will provide an update on this later in the year. As we have not suffered earthquake damage nor are we suffering from leaky building syndrome, I suspect we are not a high priority in these constrained times.



*Building for the future*



*Culture should be embraced*

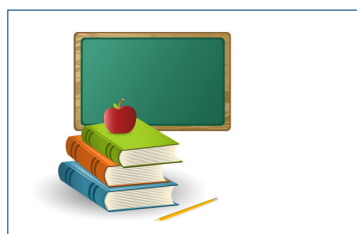
## Cultural Corner *By Sheryl Witehira*

### Kapa Haka

Our Kapa haka group represented Beachlands School at the Koanga Festival held at Sommerville Intermediate. Schools from across East Auckland participated in this all day event. Our Kapa Haka group were small in comparison to some other school but performed beautifully and were a real credit to our school. The group also performed at Te Puru at the public meeting for the Prime Minister.

### Cultural Fun Day

The cultural fun-day was held in the second to last week of term. All students dressed up in a costume that represented their culture or a culture they identified with. A whole school parade was held which was followed by a range of sports and games associated with rugby. Many thanks to Ruth Nixon and the sports leaders for organising this for us.



*"An apple a day keeps the doctor away"*

## Health and Safety Section *By Konrad Heinemann*

In the last couple of months there have been some outbreaks of measles and chickenpox reported throughout New Zealand, so this seemed like a good opportunity to discuss our planned response to the threat of infectious diseases. The schools policy on infection control aims to minimise the spread of infections amongst students by applying appropriate hygiene practices. Generally this involves basic hygiene measures such as covering coughs and sneezes, disposing of used tissues immediately, good handwashing and drying practices, etc. During times when there is a known presence of highly contagious and debilitating infections the school will reinforce these basic messages and consider further options such as finding ways for children to minimise their contact with each other, increase the level of cleaning (in particular of hard surfaces) and inform parents of the situation and measures being taken, by letter if necessary. Further to this the school has a range of specific procedures in place to deal with a potential pandemic threat which include provision for isolation of individuals and school closure if the threat becomes extreme. Further information is available on the schools website under the school policies section.

On a far more cheerful note, summer will (hopefully) arrive soon, bringing with it the long sunny days that make living out here such a pleasure. As a general reminder, please ensure your children wear their sunhats at school from the beginning of the new term, and slop on some sunscreen too.

Finally, if you have any concerns relating to safety (or health) at school, please raise them in the first instance with the principal, associate principal or the office personnel. If you wish to email a concern to the school please send it to the school office at: [info@beachlands.school.nz](mailto:info@beachlands.school.nz). The issue can then be dealt with in an appropriate manner.

Have fun in the holidays.

---

*"As a general reminder, please ensure your children wear their sunhats at school from the beginning of the new term, and slop on some sunscreen too."*

---